

FILTERING MASKS - WASHABLE UP TO 50 TIMES



FILTERING



BREATHABLE



WATER & OIL REPELLENT



NOW AVAILABLE WITH ELASTIC

MADE IN ITALY



Filtering mask, ex art 16, paragraph 2 D.L. N.18 of the 17/03/2020 (not a medical device or PPE), produced by Klopman International S.r.l



REUSABLE, WASHABLE AND STERILIZABLE UP TO 50 TIMES



SUITABLE FOR DOMESTIC WASHING UP TO 60°C



OUTER SHELL FABRIC FOR MEDICAL USE



DUBLE LAYER FOR MAXIMUM COMFORT AND FILTERING CAPACITY



TESTED AND VALIDATED BY OEKO-TEX® FOR HARMFUL SUBSTANCES



To meet the growing demand for respiratory protection, Klopman has turned its 50-year know-how of workwear fabrics to the production of double-layer face masks.

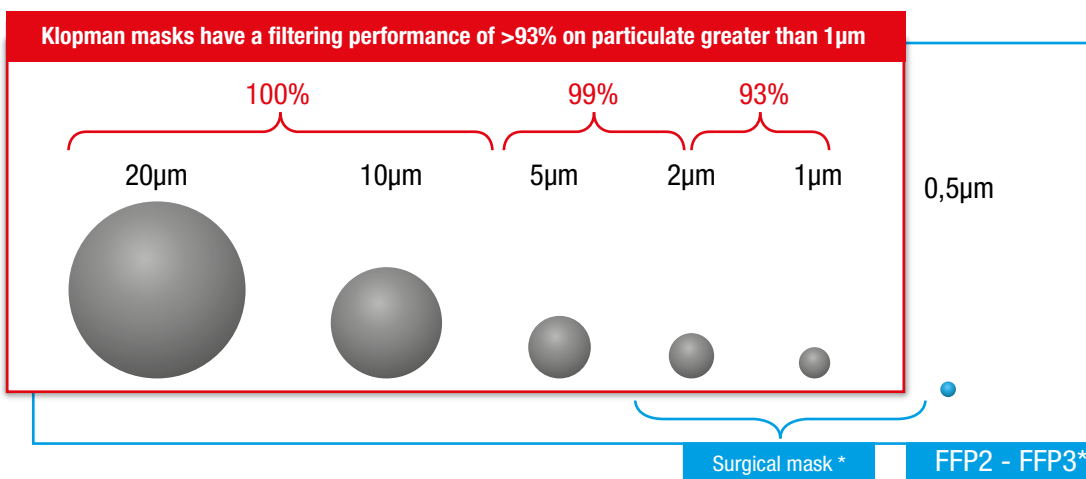
These filtering masks are designed to help to provide the wider population with a first barrier to the spread of the COVID-19 virus, to protect anyone currently working, from food sales workers to law enforcement (if not engaged in emergency operations). The masks can prevent the wearer from spreading the virus via droplets to the surrounding space.

FABRICS USED FOR THE MASK:

OUTER SHELL. Vektron 8200 fabric with water/oil repellent finish. 100% polyester fabric to guarantee a very compact construction and ensure a barrier effect, with low particle release. This fabric's characteristics mean it is normally used in electronics environments, in clean rooms, and in the healthcare sector for medical wear.

INSIDE. Polyester-cotton fabric made with polycotton short-fibre yarn to ensure: comfort to the wearer, breathability, high mechanical strength. All the above-mentioned characteristics are enhanced by the type of the weaving construction used.

FILTERING CAPACITY SCHEME



Analysis made in a certified laboratory.

Bacteria size is between 1 and 10 µm while droplets size is about 3µ.

The filtering capacity of the masks is unaltered even after repeated washes.

* bacterial type test



Klopman masks can be reused up to 50 times and are suitable for sterilization and domestic washing up to 60°C.

Their longevity offers significant advantages in terms of supply, logistics and disposal. Traditional non-woven, disposable masks, on the other hand, aside from generating tons of waste, are a derivative of petroleum. Using washable fabrics represents a sustainable and economic solution.

WHO IS KLOPMAN INTERNATIONAL

Klopman International is an Italian company that for over 50 years has been the largest European manufacturer of technical fabrics for workwear clothing, with three dedicated business areas: workwear, protective wear and corporate wear.

For years we have been supporting private and non-private companies throughout Europe, offering a range of functional and sustainable items for hospitals and technical-professional fields.

Klopman has its headquarters and production site in Frosinone (Italy), with a 70,000m² factory, 400 staff and an annual production of about 40 million metres of fabric.

The company has branch offices in Dusseldorf, Lyon, Moscow, Borås (Sweden), Dubai and Bangkok, as well as a production site in Jakarta to serve the Asian market directly. In addition to ISO 9001:2008 certification, Klopman International works in compliance with European quality management standards and is BS EN ISO 14001:2004 and BS OHSAS 18001:2007 certified.



https://www.klopman.com/wp-content/uploads/2019/10/COMPANY_PROFILE.pdf

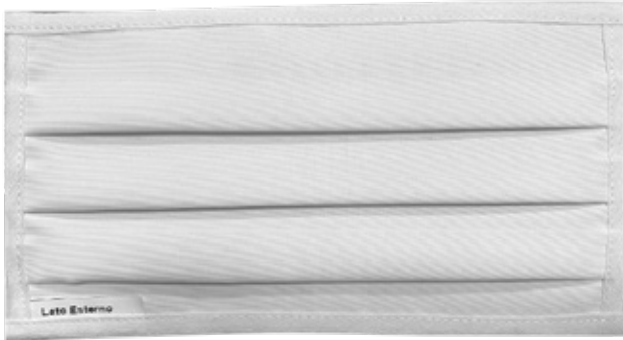


PACKAGING SPECIFICATION OF FACE MASKS

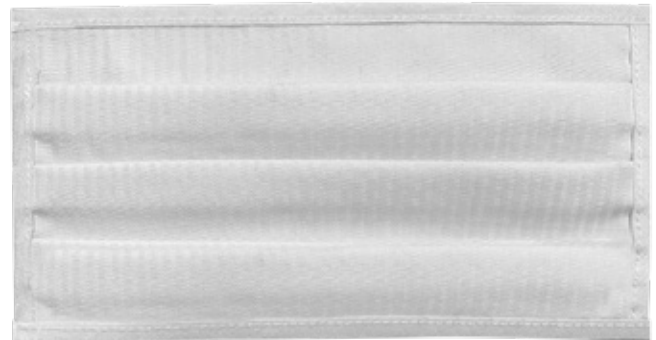
Model Kombi Klopman

Dimension of finished pleated mask 19 x 10 cm

FINISHED PRODUCT EXAMPLE



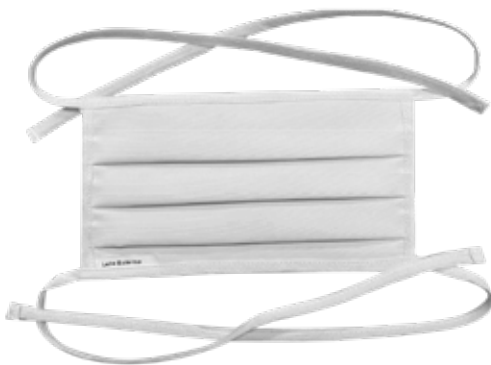
White mask: externally facing view



White mask: internally facing view

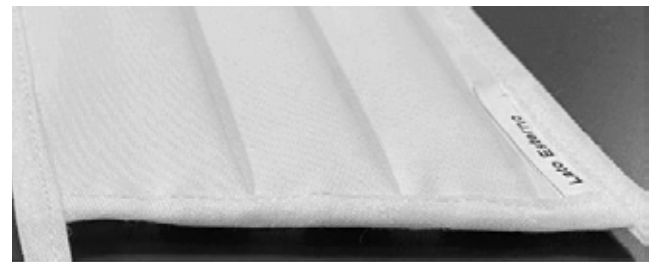
The masks has three folds/pleats (as per photo below):

To give greater protection of the mask during use and maintenance (washing and drying) it is realized with four additional overlapping edges.



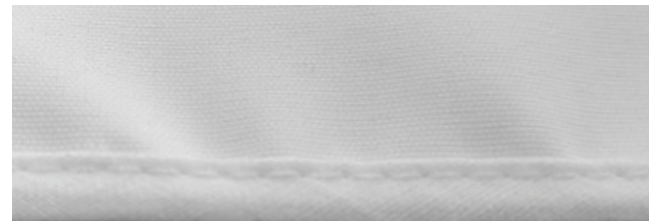
Example of tying laces:

The same fabric used for the edging is used for laces, to give superior hold during use and durability during washing.



Example of lateral edge:

Please note that the colour of edging is subject to fabric availability.



Packaging example with washing instructions suggested by Klopman

